

# Inspection Report

SIMPLIFY130206

- |   |  |  |
|---|--|--|
| <input checked="" type="checkbox"/> FRI (Final random inspection) | <input type="checkbox"/> PSI (Pre-Shipment inspection) | <input type="checkbox"/> DUPRO (During Production Inspection)      |
| <input type="checkbox"/> Loading Supervision                      | <input type="checkbox"/> Sample Pickup                 | <input type="checkbox"/> Re-inspection (previous report n°): _____ |
| <input type="checkbox"/> Amendment: _____                         | <input type="checkbox"/> Manufacturing Process Audit   | <input type="checkbox"/> Other: _____                              |

## INSPECTION RESULT

## REJECTED

AQL ACCEPTED / FAILED &amp; SEE REMARKS \*1 to \*x

AQL FAILED &amp; SEE REMARK \*1~\*2 [CLIENT HAS THE FINAL DECISION]

## GENERAL INFORMATION

Product Name:	Men Softshell Jacket / Women Softshell Jacket / Men Ski Jacket
Inspection location:	XXXXXXXXXXXX
Inspection date:	Apr.15,2013
Your reference number:	XXXXXXXXXXXX
P/O number:	PK-FS130124
Supplier/Vendor:	XXXXXXXXXXXX
Factory:	XXXXXXXXXXXX
Order quantity:	3800pcs
Pcs ready for inspection:	500pcs
Reference sample available:	No



## INSPECTION SUMMARY: (IN COMPARISON TO CLIENT'S INSTRUCTIONS AND REFERENCE SAMPLE, AS AVAILABLE)

1. QUANTITY	<input type="checkbox"/> ACCEPTED <input type="checkbox"/> REJECTED <input type="checkbox"/> NOT APPLICABLE <input checked="" type="checkbox"/> ON HOLD
2. PRODUCT CONFORMITY	<input checked="" type="checkbox"/> ACCEPTED <input type="checkbox"/> REJECTED <input type="checkbox"/> NOT APPLICABLE <input type="checkbox"/> ON HOLD
3. WORKMANSHIP/APPEARANCE/FUNCTION	<input type="checkbox"/> ACCEPTED <input checked="" type="checkbox"/> REJECTED <input type="checkbox"/> NOT APPLICABLE <input type="checkbox"/> ON HOLD
4. PACKING	<input type="checkbox"/> ACCEPTED <input type="checkbox"/> REJECTED <input type="checkbox"/> NOT APPLICABLE <input checked="" type="checkbox"/> ON HOLD
5. MARKING / LABELS	<input checked="" type="checkbox"/> ACCEPTED <input type="checkbox"/> REJECTED <input type="checkbox"/> NOT APPLICABLE <input type="checkbox"/> ON HOLD
6. DATA MEASUREMENT / FIELD TESTS	<input type="checkbox"/> ACCEPTED <input type="checkbox"/> REJECTED <input type="checkbox"/> NOT APPLICABLE <input checked="" type="checkbox"/> ON HOLD

## IMPORTANT REMARKS

- No dimension chart was found on client's tech file , the products were measured according to factory's dimension chart.
- Found the units were 500pcs (13.2%) finished but without hangtag & care label and 0% packed into the polybag and export carton before inspection.  
For PK-SFJ120653: finished 50pcs , sample sizes: 20pcs ;  
For PK-SFJ120662: finished 30pcs , sample sizes: 12pcs ;  
For PK-SFJ120641: finished 30pcs , sample sizes: 12pcs ;  
For PK-SJ120740: finished 390pcs , sample sizes: 156pcs.

**INSPECTION METHOD APPLIED:**

[X] INSPECTION SPECIFICATION PROVIDED BY CLIENT (DATED: APR.11,2013 )

[X] GENERAL INSPECTION PROCEDURE (SHOP-HI001)

**SAMPLING PLAN:ANSI/ASQ Z1.4-2008**

GENERAL INSPECTION LEVEL ( II )

OTHERS

[ X ] NORMAL INSPECTION

[ ] REDUCED INSPECTION

[ ] TIGHTENED INSPECTION

AQL LEVEL:	CRITICAL	( 0 )	AC :	0	RE :	1
	MAJOR	( 2.5 )	AC :	10	RE :	11
	MINOR	( 4.0 )	AC :	14	RE :	15

<b>RESULTS:</b>	CRITICAL	MAJOR	MINOR
FOUND	0	12	16
MAX	0	10	14

DEFECT DESCRIPTION			CRITICAL	MAJOR	MINOR
PK-SFJ120653	Black	Poor sewing of size label		1	
		Puckering			2
		Untrimmed thread ends			1
PK-SFJ120662	Red/black	Needle holes		1	
		Dirty mark			2
		High-low sleeve opening			1
		Untrimmed thread ends			1
PK-SFJ120641	Black/grey	Poor function of zipper		2	
		Needle holes		1	
		Puckering			2
		Skip stitches			1
		Dirty mark			1
PK-SJ120740	Dark grey / black	Needle holes		7	
		Dirty mark			3
		Puckering			1
		Untrimmed thread ends			1
TOTAL			0	12	16

INSPECTION CRITERIA			
GENERAL	CRITERIA	ALL PASS	FAILURE QUANTITY
- (X) Quantity	In conformity with P.O.	SEE PROBLEMATIC REMARK 2	
- (X) Product conformity – Style*	In conformity with ref. Sample / Spec.	SEE PROBLEMATIC REMARK 2	
- (X) Product conformity – Color*	In conformity with ref. Sample / Spec.	SEE PROBLEMATIC REMARK 2	
- (X) Product conformity - Material	In conformity with ref. Sample / Spec.	SEE PROBLEMATIC REMARK 2	
- (X) Packaging conformity*	In conformity with P.O. / Spec.	SEE PROBLEMATIC REMARK 2	
- (X) Labeling & Marking conformity*	In conformity with ref. Sample / Spec.	SEE PROBLEMATIC REMARK 2	
- (X) Shipping Mark conformity*	In conformity with P.O. / Spec.	SEE PROBLEMATIC REMARK 2	
- (X) Unit's Appearance	In conformity with ref. Sample / Spec.	BEYOND AQL	
- (X) Unit's workmanship	In conformity with ref. Sample / Spec.		
- (X) Accessories*	As per Client's requirement	SEE PROBLEMATIC REMARK 2	
- ( ) Others		N/A	

“\*\*” Photos to follow

FIELD TESTS & DATA MEASUREMENT	SAMPLE LEVEL	NO.	CRITERIA	ALL PASS	FAILURE QUANTITY
- ( ) Normal functional Test			As per instruction manual	N/A	
- ( ) Assembly Test*			As per instruction manual	N/A	
- ( ) UPC/Barcode Scan Test*			As per Client's requirement	N/A	
- ( ) I2 of 5 Code Check			As per Client's requirement	N/A	
- (X) Unit size check	3PCS / ITEM		Shall be within +/-5% tolerance	SEE PROBLEMATIC REMARK 1	
- (X) Unit weight check	3PCS / ITEM		Shall be within +/-5% tolerance	PASS	
- ( ) Drop Test (if needed)*			As per Client's requirement or ISTA-1A	N/A	
- ( ) Others				N/A	

“\*\*” Photos to follow

PRODUCT INFORMATION							
PO#	Model#	Order Quantity	Inspection Quantity	Sample Size	No. Of Defects Detected		
					Critical	Major	Minor
PK-FS130124	PK-SFJ120641	1200	50	20	0	3	4
	PK-SFJ120662	1000	30	12	0	1	4
	PK-SFJ120653	600	30	12	0	1	3
	PK-SJ120740	1000	390	156	0	7	5
TOTAL		3800pcs	500pcs	200pcs	0	12	16

MODEL#	PRODUCT DIMENSION (CM)			SPEC (CM)			PRODUCT WEIGHT (KGS)	PRODUCT BARCODE
	Length (L)	Width (W)	Height (H)	Length (L)	Width (W)	Height (H)		
PK-SFJ120641	See below table			See problematic remark 1			L: 0.63	N/A
PK-SFJ120662							L: 0.67	N/A
PK-SFJ120653							S: 0.53 L: 058	N/A
PK-SJ120740							M: 0.85	N/A

MODEL: PK-SF1120653									
MEASUREMENT POINTS	SIZE	S			SIZE	L			+/- TOL
Shoulder	40	/	/	/	43	/	/	/	1
Chest	49	-0.5	/	-0.5	53	-1	-0.5	-1	1
Waist	43	-0.5	-0.5	/	47	+0.5	+0.5	/	1
Hem	46/53	-2	-1	-1.5	50/57	-2	-2	-1	1
B/C length	66	/	+0.5	/	70	-0.5	-0.5	/	+2/-1
Sleeve length	76	-1	-1	-0.5	80	+0.5	/	/	+2/-1
1/2 bicep	19.5	-0.5	/	-0.5	21.5	/	+0.5	/	1
1/2 cuff	8.5	-0.5	/	-0.5	9.5	/	/	+0.2	0.5
	12	-0.5	/	-0.5	13	/	/	+0.2	1
Front neck drop	10.75	-0.3	-0.3	/	11	-0.3	+0.3	/	1
Collar width	17.75	+1	+0.5	/	18	+1	/	+1	1
Hood width	26.5	-2	-2	-2	27	-2	-2	-2	1
Hood height	33.5	-1	-0.5	-1	34	-1.5	-1	-1.5	1

MODEL: PK-SF1120662									
MEASUREMENT POINTS	SIZE	L			SIZE				+/- TOL
Chest	60	-0.5	/	-0.5					1
Hem	51/59	-2	-1.5	-2					1
B/C length	76	-1	-0.5	/					+2/-1
Sleeve length	82	64.5/81	65/81	65/81					+2/-1
1/2 bicep	26	-1	/	/					1
1/2 cuff	11/14. 5	-0.5	-0.5	-0.5					1
Front neck drop	11.5	-1	/	-0.5					1
Collar width	20	+2	+1.5	+1					1
Hood width	25	-2	-1.5	-2					1
Hood height	35	-2	-1	-1					1

MODEL: PK-SFJ120641									
MEASUREMENT POINTS	SIZE	L			SIZE				+/- TOL
Chest	60	/	+0.5	/					1
Hem	51/59	/	+1	+0.5					1
B/C length	76	-0.5	-0.5	/					+2/-1
Sleeve length	82	+1	+1	+0.5					+2/-1
1/2 bicep	26	-1	-0.5	/					1
1/2 cuff	11/14. 5	/	/	/					1
Front neck drop	11.5	-1	-0.5	-0.5					1
Collar width	20	+2	/	/					1
Hood width	25	-1	-1	-1.5					1
Hood height	35	-2	-1	-1					1

MODEL: PK-SJ120740									
MEASUREMENT POINTS	SIZE	M			SIZE				+/- TOL
Chest	58	/	+0.5	/					1
Hem	49/57	-0.5	/	-0.5					1
B/C length	74	/	+1	+0.5					+2/-1
Sleeve length	80	65/80	65/80	65.5/80. 5					+2/-1
1/2 bicep	25	-1	-0.5	-1					1
1/2 cuff	11/14. 5	-0.5	/	/					1

Front neck drop	11.5	-0.5	/	-0.5					1
Collar width	20	+0.5	+0.5	+0.5					1
Hood width	25	/	-0.5	-0.5					1
Hood height	35	-1.5	-1	-1					1

**PRODUCT PACKAGING INFORMATION****INNER AND MASTER PACKAGING**

MODEL#	INNER PACKAGE PACKED QUANTITY	MASTER PACKAGE QUANTITY	MASTER PACKAGE DIMENSION AND WEIGHT				
			Length (L) (cm)	Width (W) (cm)	Height (H) (cm)	G.W (Kg)	N.W (Kg)
PK-SFJ120641	/	/	/	/	/	/	/
PK-SFJ120662	/	/	/	/	/	/	/
PK-SFJ120653	/	/	/	/	/	/	/
PK-SJ120740	/	/	/	/	/	/	/
<b>PACKING</b>							
No any package was available during inspection.							

**MASTER PACKAGE DETAIL**

MODEL#	# OF CORRUGATED PAPER PLIES	FASTENING - METAL STAPLES	METHOD OF SEALING	STRAPPING
ALL ITEM	/	/	/	/

**INFORMATIVE REMARKS**

1. THIS INSPECTION RESULT RELATES EXCLUSIVELY TO THE WORK ORDERED AND THE LOT INSPECTED.
2. CLIENT APPROVED SAMPLE AVAILABLE FOR INSPECTION REFERENCE AT TIME OF INSPECTION:  
SAMPLE: YES ( ); NO ( X ) -FACTORY SAMPLE: YES ( ).
3. TOTAL \_\_\_/\_\_\_ CARTONS WERE DRAWN FOR INSPECTION;  
CARTON NO.: NO ANY PACKAGE WAS AVAILABLE DURING INSPECTION.
4. INSPECTION ENVIRONMENTAL CONDITIONS MEET REQUIREMENT: YES ( X ); NO ( ).
5. UPON ARRIVAL AT INSPECTION LOCATION, THE PRODUCTION WAS 13.2 % FINISHED AND 0% PACKED;  
NON-INSPECTED / INCOMPLETED LOT SIZE 3300 PCS, PENDING FOR CLIENT'S AUTHORIZATION ON INCOMPLETE LOT.
6. THE TESTING/MEASURING EQUIPMENTS APPLIED DURING THE INSPECTION WERE ALL CALIBRATED AND WITHIN THE PERIOD OF VALIDITY. YES (X); NO ( ).
7. NO REF SAMPLE WAS PROVIDED BY FACTORY.

**INSPECTOR:** FIGO

## PHOTO ATTACHMENT





1) Semi-finished products



2) Semi-finished products



3) Semi-finished products



4) Semi-finished products



5) Semi-finished products



6) Semi-finished products





7) Production line



8) Production line



9) Product front view (PK-SFJ120653)



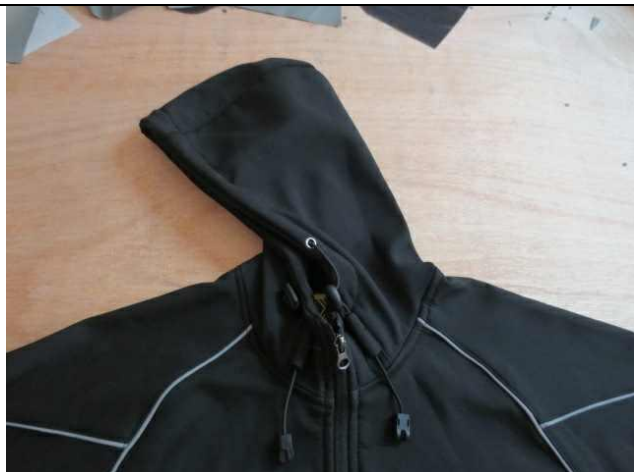
10) Armhole view



11) Velcro view



12) Velcro view



13) Part view



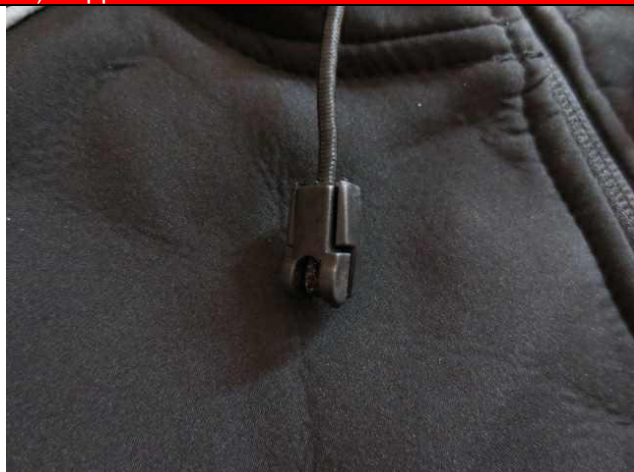
14) Pocket view



15) Zipper view



16) Product back view



17) Part view



18) Part view





19) Part view

20) Product inner view



21) Size label

22) Main label

23) Main label / size label

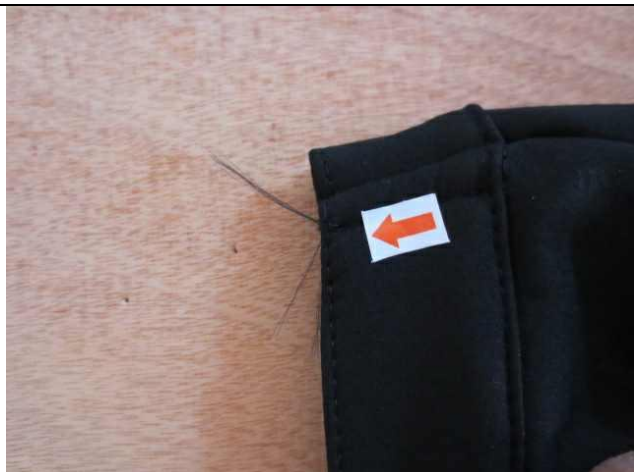
24) Major: poor sewing of label



25) Minor: puckering



26) Minor: puckering



27) Minor: untrimmed thread ends



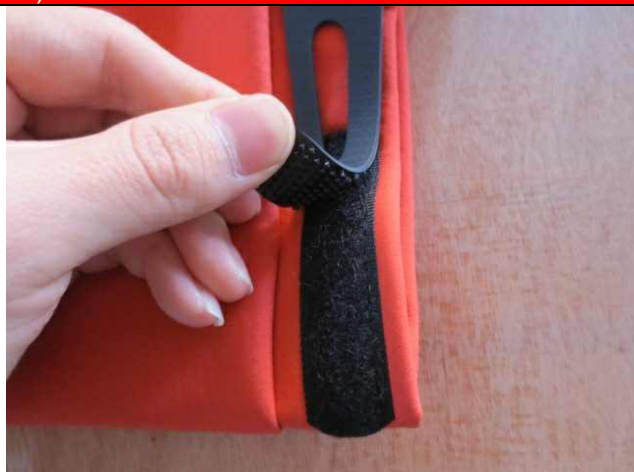
28) Product front view - PK-SFJ120662



29) Armhole view



30) Armhole view



31) Velcro view

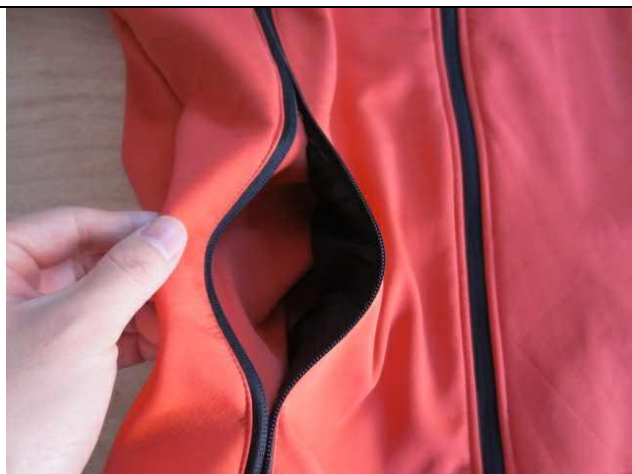


32) Part view





33) Zipper view



34) Pocket view



35) Part view



36) Part view



37) Part view



38) Product back view



39) Product inner view



40) Main label / size label



41) Major: needle holes



42) Minor: dirty mark



43) Minor: dirty mark



44) Minor: high-low sleeve opening





45) Minor: untrimmed thread ends



46) Product front view - PK-SFJ120641



47) Armhole view



48) Armhole view



49) Velcro view



50) Pocket view



51) Zipper view



52) Zipper function test



53) Part view



54) Part view



55) Part view



56) Product back view



57) Product inner view



58) Main label / size label



59) Major: poor function of zipper



60) Major: poor function of zipper



61) Major: needle holes

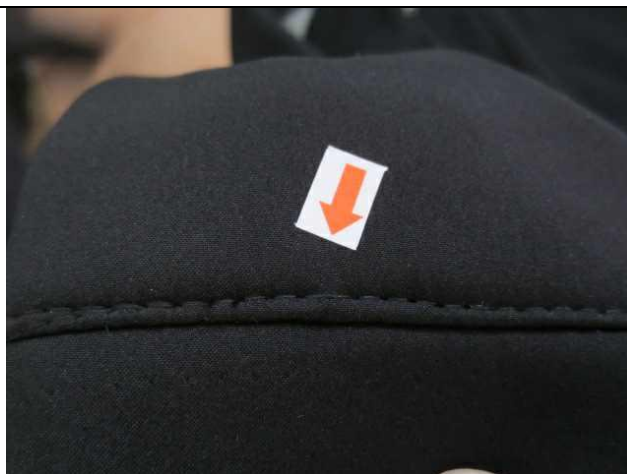


62) Minor: puckering





63) Minor: puckering



64) Minor: skip stitches



65) Minor: dirty mark



66) Product front view - PK-SJ120740



67) Armhole view



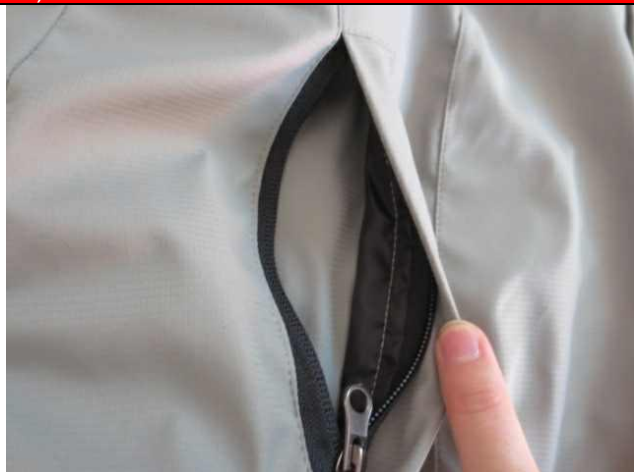
68) Armhole view



69) Velcro view



70) Pocket view



71) Pocket view



72) Zipper view



73) Zipper function test



74) Part view





75) Product back view



76) Front view



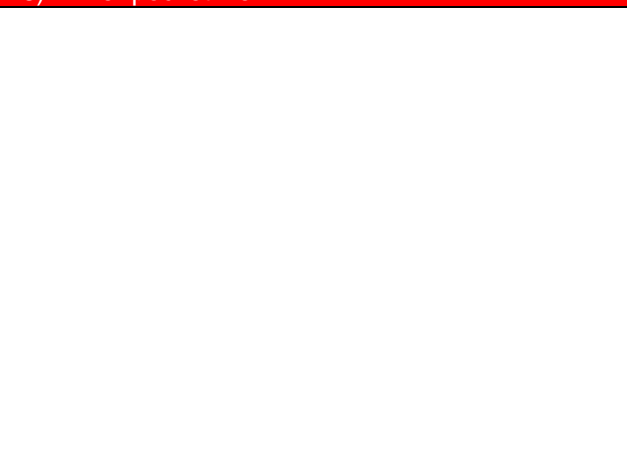
77) Product inner view



78) Inner pocket view



79) Zipper view



80) Main label / size label





81) Product inner view



82) Major: needle holes



83) Major: needle holes



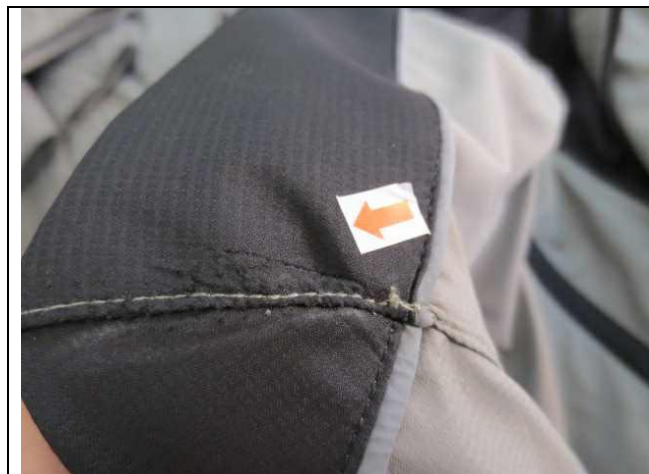
84) Major: needle holes



85) Major: needle holes



86) Major: needle holes



87) Major: needle holes



88) Major: needle holes



89) Minor: dirty mark



90) Minor: dirty mark



91) Minor: dirty mark



92) Minor: puckering

	Nil
93) Minor: dirty mark	94) End